

IU CLIMATE ACTION PLANNING COMMITTEE VIRTUAL OPEN FORUM

Open to all IU students, faculty & staff

THURSDAY, NOVEMBER 3
2:00 - 3:00 PM

Thank you for joining us today.



go.iu.edu/climate





INDIANA UNIVERSITY CLIMATE ACTION PLAN

VIRTUAL PUBLIC FORUM

November 3, 2022



**Thank you for joining us
today!**

Your participation and input will
guide the development of Indiana
University's Climate Action Plan.

SMITHGROUP TEAM



STET SANBORN
PRINCIPAL IN CHARGE



ALICIA ADAMS
PROJECT MANAGER



LING ALMOUBAYYED
RESILIENCE PLANNER



KEVIN KING
SENIOR URBAN PLANNER



JAKE CHEVRIER
SUSTAINABILITY STRATEGIST



ALEC BARNES
ENVIRONMENTAL ENGINEER



LAUREN LEIGHTY
CAMPUS PLANNER



KATRINA KELLY-PITOU
ENERGY ECONOMIST

An aerial photograph of a lush green forest with a dark blue river winding through it. The trees are dense and vibrant green, while the river is a deep, dark blue.

THE PURPOSE OF TODAY'S MEETING IS TO:

- Get to know you
- Introduce you to the project and process
- Answer your questions
- Share next steps for the plan

WE WANT TO LEARN ABOUT YOU!

QUESTION 1

How important do you think the topic of climate change is to our present and future?

QUESTION 2

How comfortable are you with your knowledge around the topic of climate change?

QUESTION 3

How worried are you about your future with regard to climate change?

TELL US WHAT YOU THINK!

What are some **opportunities** for Indiana University to reduce carbon emissions?

What may be some **challenges** that Indiana University may face when reducing carbon emissions?

COMMITTEE GOAL AND GUIDING PRINCIPLES

PURPOSE OF THE COMMITTEE

Develop recommendations for short- and long-term opportunities to **reduce greenhouse gas emissions** on all IU campuses



COMMITTEE GOAL AND GUIDING PRINCIPLES

GUIDING PRINCIPLES

- Complete, comprehensive and scientifically sound
- Immediate implementation where possible
- Financial resources required
- Funding sources and savings identified
- Broad input from students, faculty and staff on all campuses
- Benchmarks, dashboards and transparency of process and progress
- **Carbon neutrality by 2040**



INDIANA UNIVERSITY

CLIMATE ACTION PLANNING COMMITTEE

COMMITTEE CHAIR

Thomas A. Morrison

Vice President for Capital Planning and Facilities

COMMITTEE MEMBERS

FACULTY

Siân Mooney

Professor and dean of the O'Neill School of Public and Environmental Affairs

James Farmer

Associate professor, O'Neill School of Public and Environmental Affairs at IU Bloomington; director of the IU Food Institute and co-director of IU Campus Farm

Erin Argyilan

Professor and chair of the Department of Geosciences at IU Northwest

Alisa Clapp-Itnyre

Professor of English at IU East

Todd Grote

Associate professor of geoscience at IU Southeast

Broxton Bird

Associate professor of earth sciences at IUPUI

Sarah Mincey

Clinical associate professor, O'Neill School of Public and Environmental Affairs at IU Bloomington; director, Integrated Program on the Environment; and managing director, Environmental Resilience Institute

Gabriel Filippelli

Professor in the School of Science at IUPUI and executive director of the Environmental Resilience Institute

STUDENTS

Hope Stone, IU Northwest

Aspen Grieshaber, IUPUI

Rayden Sia, IUPUI

Alana Maria Davicino, IU Bloomington

STAFF

Kevin Elmore

Executive director of facilities and operations at IU Northwest

Camy Broeker

Vice chancellor for business and finance at IUPUI

Brad Boswell

Executive director of state relations

Jessica Davis

Interim university director of sustainability

OFFICE OF SUSTAINABILITY

“...sustainability, stewardship, and accountability for the natural, human, and economic resources and relationships entrusted to IU...”

2014 Indiana University Bicentennial Strategic Plan

12

SUSTAINABILITY-RELATED RESEARCH CENTERS INSTITUTES

60+

INTERNS, EXTERNS, AND SCHOLARS MENTORED ANNUALLY

500+

SUSTAINABILITY-RELATED COURSES

Bloomington

IUPUI

IU Kokomo

IU South Bend

IUPUC

IU Southeast

IU Northwest

IU East

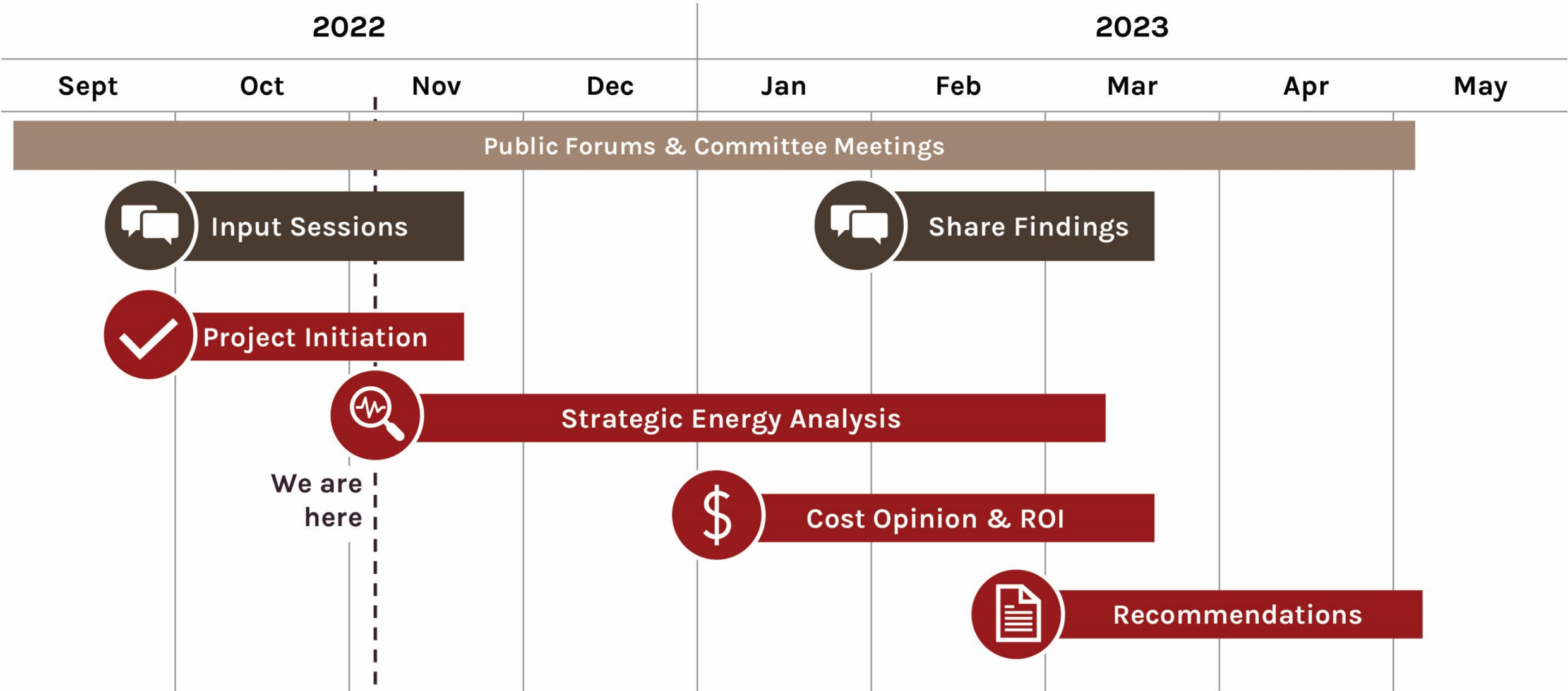
6

WORKING GROUPS THAT BRING FACULTY, STAFF, AND STUDENTS TOGETHER TO COLLABORATE ON SUSTAINABILITY SOLUTIONS

 **TREE CAMPUS**
HIGHER EDUCATION
An Arbor Day Foundation Program


Making the World Safer for Pollinators
Bee Campus USA
One Campus at a Time
Bee Campus USA is an initiative of the XFF

PROJECT SCHEDULE



PUBLIC FORUMS

Trip #1: Gary, Indianapolis, Kokomo

Date	Campus	Location	Event
September 27	IUN	Gary	Public Forum #1
September 28	IUPUI	Indianapolis	Public Forum #2
	IUK	Kokomo	Public Forum #3

Trip #2: South Bend

Date	Campus	Location	Event
October 12	IUSB	South Bend	Public Forum #4

Trip #3: New Albany

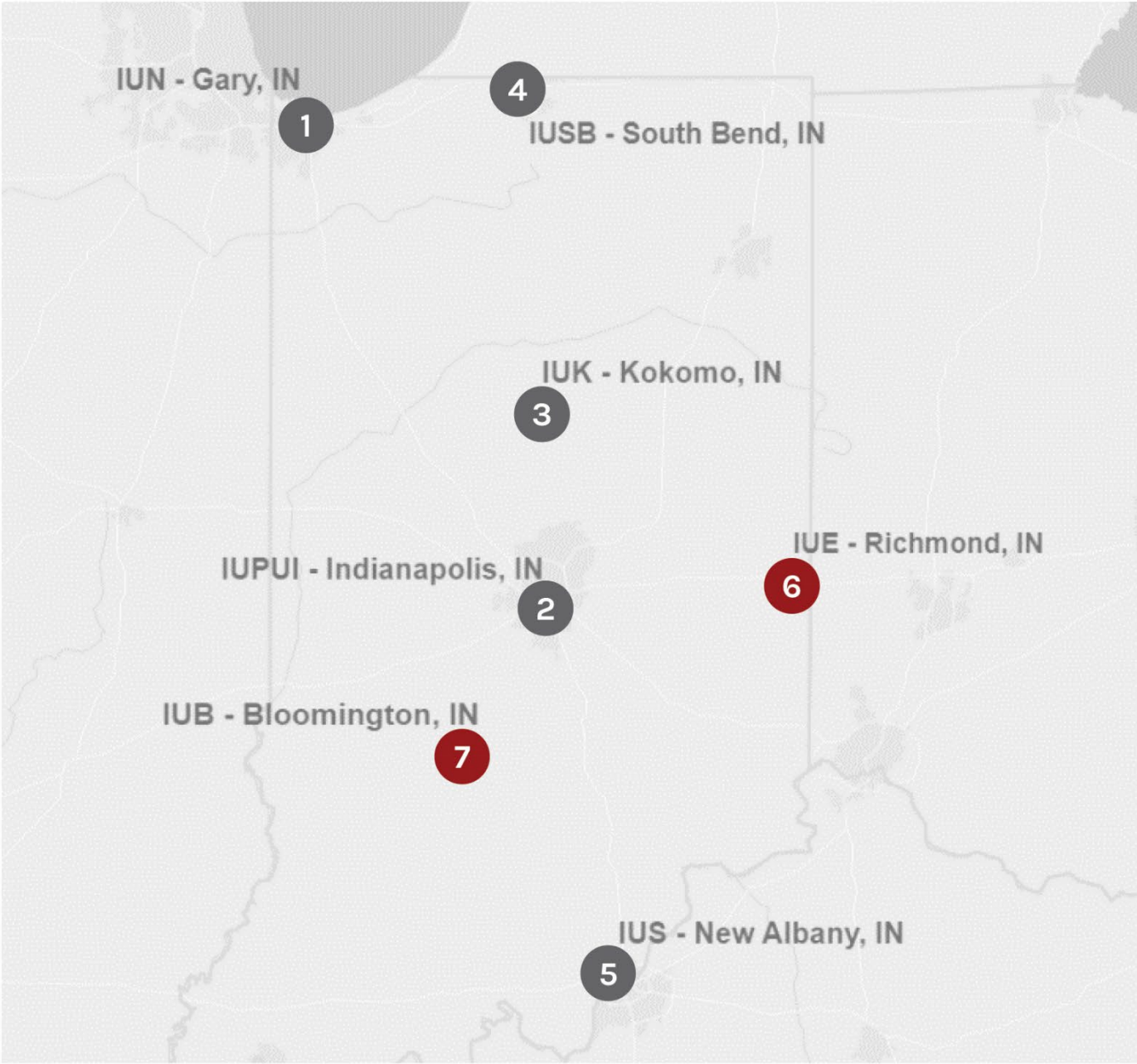
Date	Campus	Location	Event
October 25	IUS	New Albany	Public Forum #5

Virtual Session

Date	Campus	Location	Event
November 3	All	Zoom	Virtual Forum Session

Trip #4: Richmond, Bloomington

Date	Campus	Location	Event
November 15	IUE	Richmond	Public Forum #6
November 16	IUB	Bloomington	Public Forum #7



WHAT WE'VE HEARD

WHAT IS INDIANA UNIVERSITY DOING TO REDUCE CARBON EMISSIONS TODAY?

Scheduling for demand load

STARS Reporting

LEED Standards for new construction & renovation

Update HVAC equipment

Building community partnerships

Window replacements

Climate change & sustainability courses

Shut-off timers & occupancy sensors for campus, lighting, & equipment

Upgrade boilers

Independent building utility meters

Water conservation (shut-off timers, low-flow toilets)

Riding the bus & expanding bus and shuttle service

EV and E-bike charging stations

Walking and maintaining a walkable campus

Rideshare and carpooling

Biking and embracing bike routes (such as Indianapolis Cultural Trail)

Electrifying University fleet and grounds equipment

Temperature set-points

White roofs on campus buildings

Lighting upgrades (classrooms, parking garages)

Solar panels on academic buildings

Retro-commissioning existing buildings

Signed up for renewable energy programs

Virtual learning

Student Sustainability Council and partnership with Office of Sustainability for initiatives

Expanding recycling & landfill diversion

Reducing amount of meat eaten on campus

Replacing monitors and screens to LED

Centralized purchasing

Honors College Earth Day collaborations

Sustainability clubs

Reducing impervious surfaces

Native prairie plantings & no-mow zones

Tree planting

Rain gardens & reusing water

STARS REPORTING

WHAT IS STARS?

“The Sustainability Tracking, Assessment & Rating System (STARS) is a transparent, self-reporting framework for colleges and universities to measure their sustainability performance.”



Source: [About STARS](#)

AN OVERVIEW OF STARS RATING CATEGORIES

Category	Topics
Academics	Curriculum Research
Operations	Air & Climate Buildings Energy Food & Dining Grounds Purchasing Transportation Waste Water
Engagement	Campus Engagement Public Engagement
Planning & Administration	Coordination & Planning Diversity & Affordability Investment & Finance Wellbeing & Work
Innovation & Leadership	Exemplary Practice Innovation

STARS REPORTING

Indiana University STARS Reporting

IU CAMPUS	RATING
IU Bloomington	Gold
IU South Bend	Bronze
IUPUI	Gold
IU Southeast	Silver
IU East	Not yet reporting
IU Kokomo	Not yet reporting
IU Northwest	Not yet reporting



WHAT DO WE MEAN BY “CARBON NEUTRALITY”?

Indiana University
has set a target for
**carbon neutrality by
2040.**

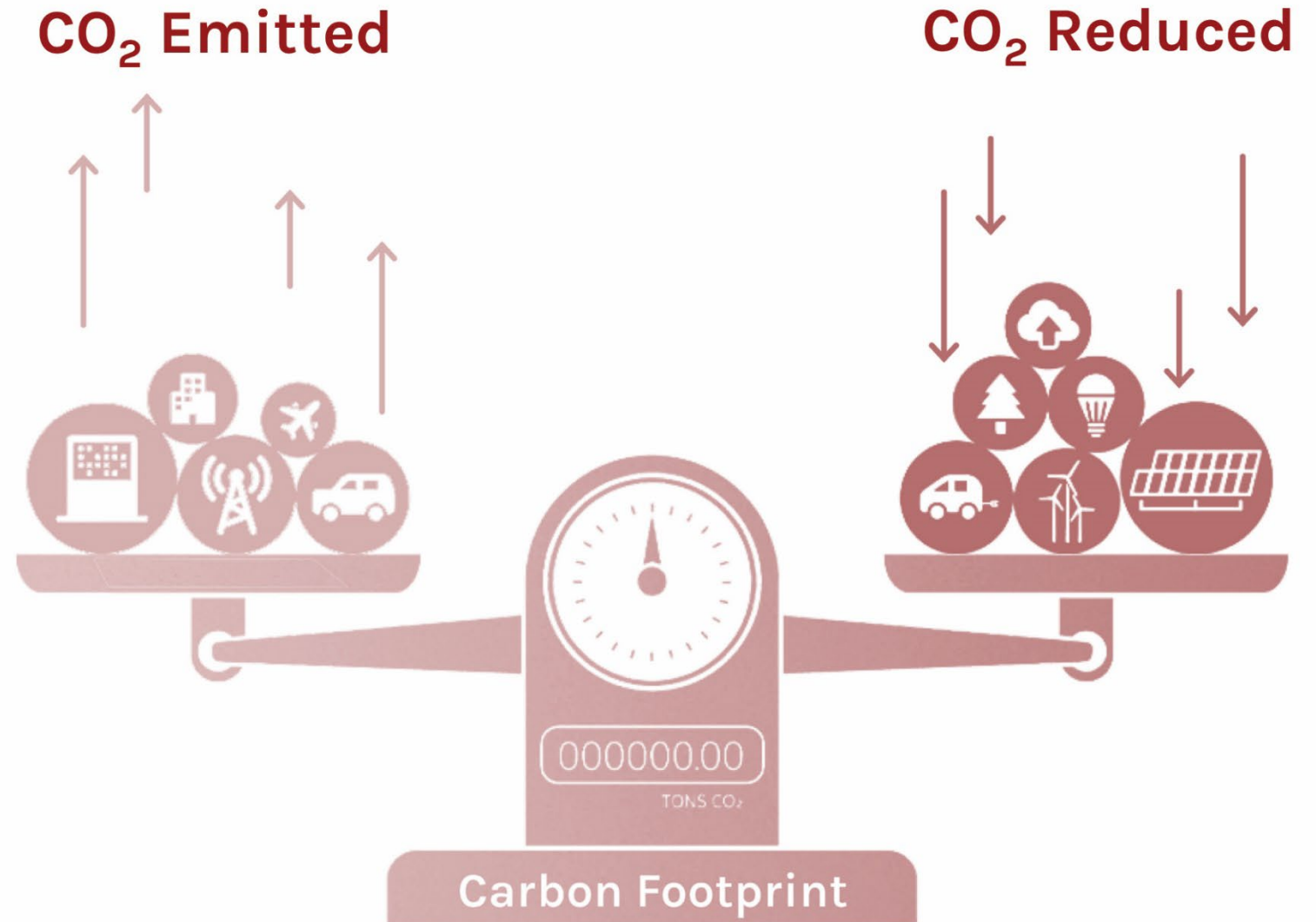
But what does this
mean?

CARBON NEUTRALITY	
Definition	Reduces carbon emissions and balances remaining emissions
Emission Types	Scopes 1 & 2 (Scope 3 is optional)
Typical Application	Institution, company, or product

WHAT WILL WE BE MEASURING?

Based on historic trends, current state, and future projections, we will be measuring:

- **Energy Use**
- **Energy Use Intensity (EUI)**
- **Greenhouse Gas (GHG) emissions**



UNDERSTANDING GHG EMISSIONS

SCOPE 1 EMISSIONS

Direct emissions that IU makes directly – for example while running its boilers and vehicles.

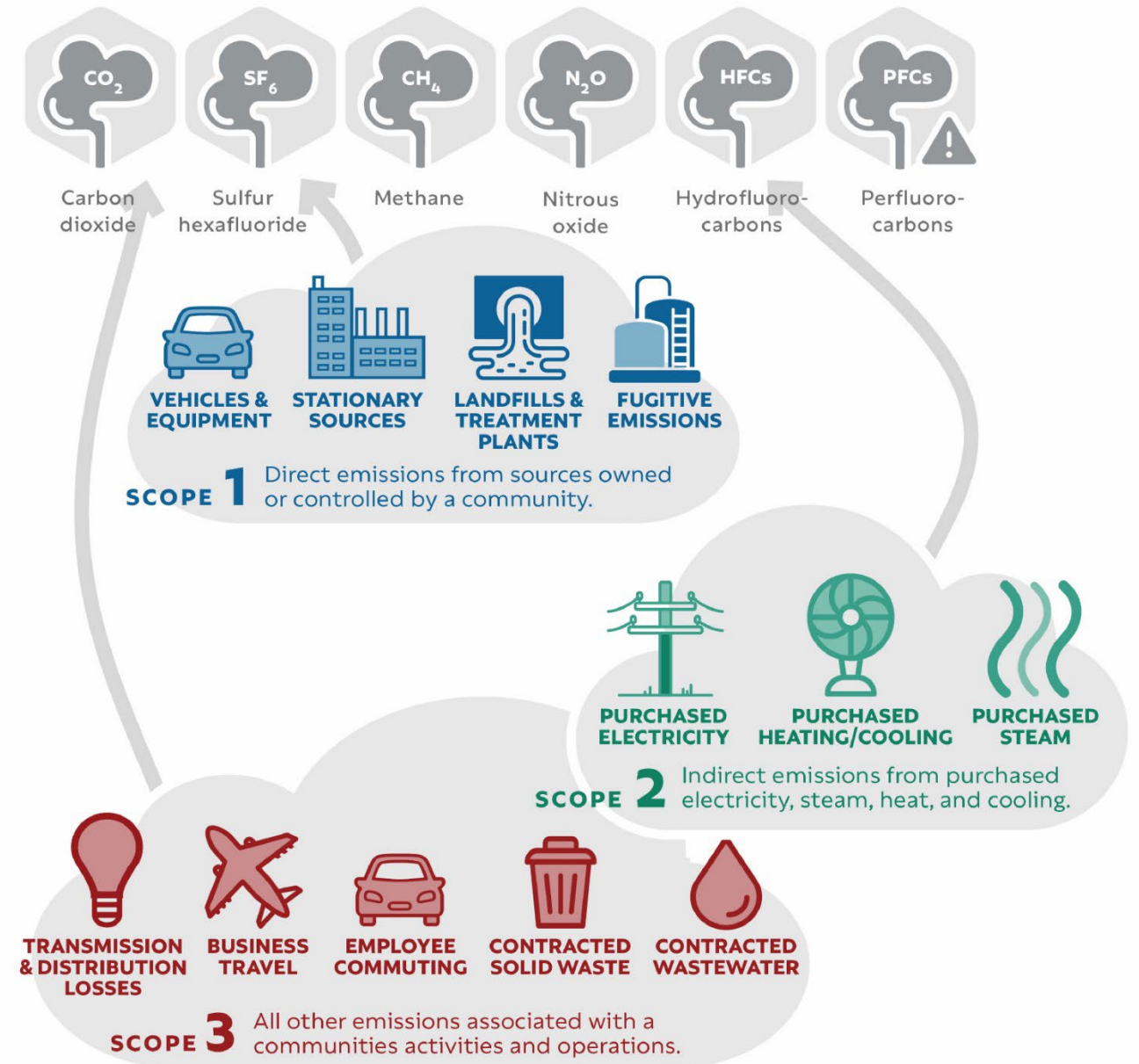
SCOPE 2 EMISSIONS

Indirect emissions from purchased electricity, steam, heat, and cooling.

SCOPE 3 EMISSIONS

All other indirect emissions the result of activities from assets not owned or controlled BY Indiana University.

WHAT ARE CONTRIBUTING TO OUR EMISSIONS NOW?



Source: Diagram based on Greenhouse Gases Diagram from EPA

IU GREENHOUSE GAS EMISSIONS DASHBOARD

TRACKING EMISSIONS

Greenhouse Gas Emissions Dashboard INDIANA UNIVERSITY

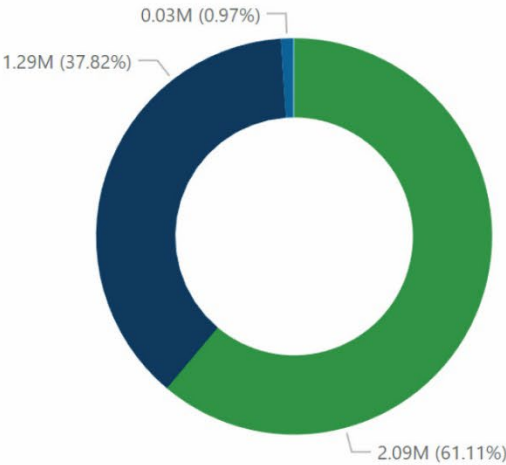
Click to Filter by Campus



GHG EMISSIONS BY SOURCE

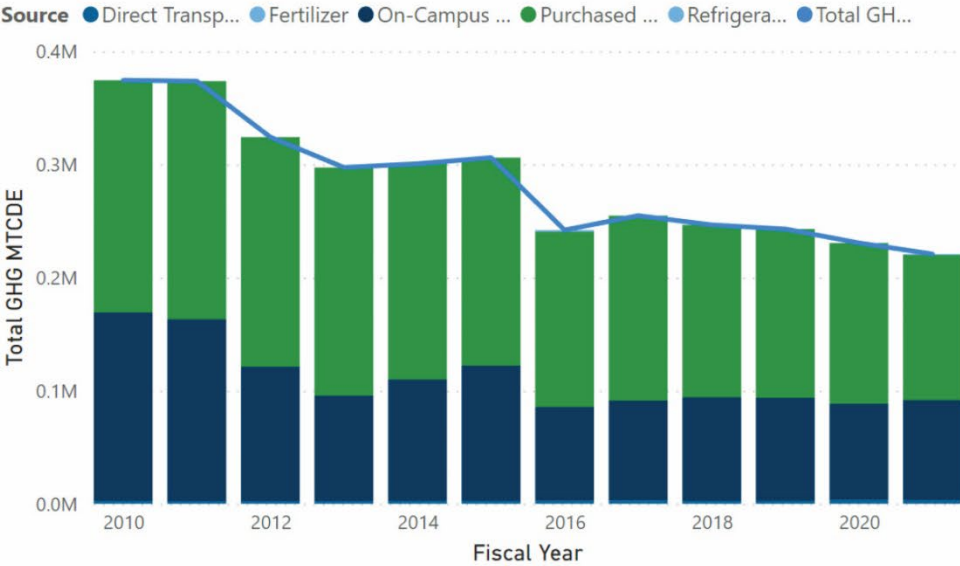
GHG Emission Sources

- Direct Transportation Sources
- Fertilizer
- On-campus Stationary
- Purchased Electricity - Indirect
- Refrigerants & Chemicals
- Total GHG MTCDE



- Purchased Electricity - In...
- On-Campus Stationary
- Direct Transportation Sou...
- Refrigerants & Chemicals
- Fertilizer

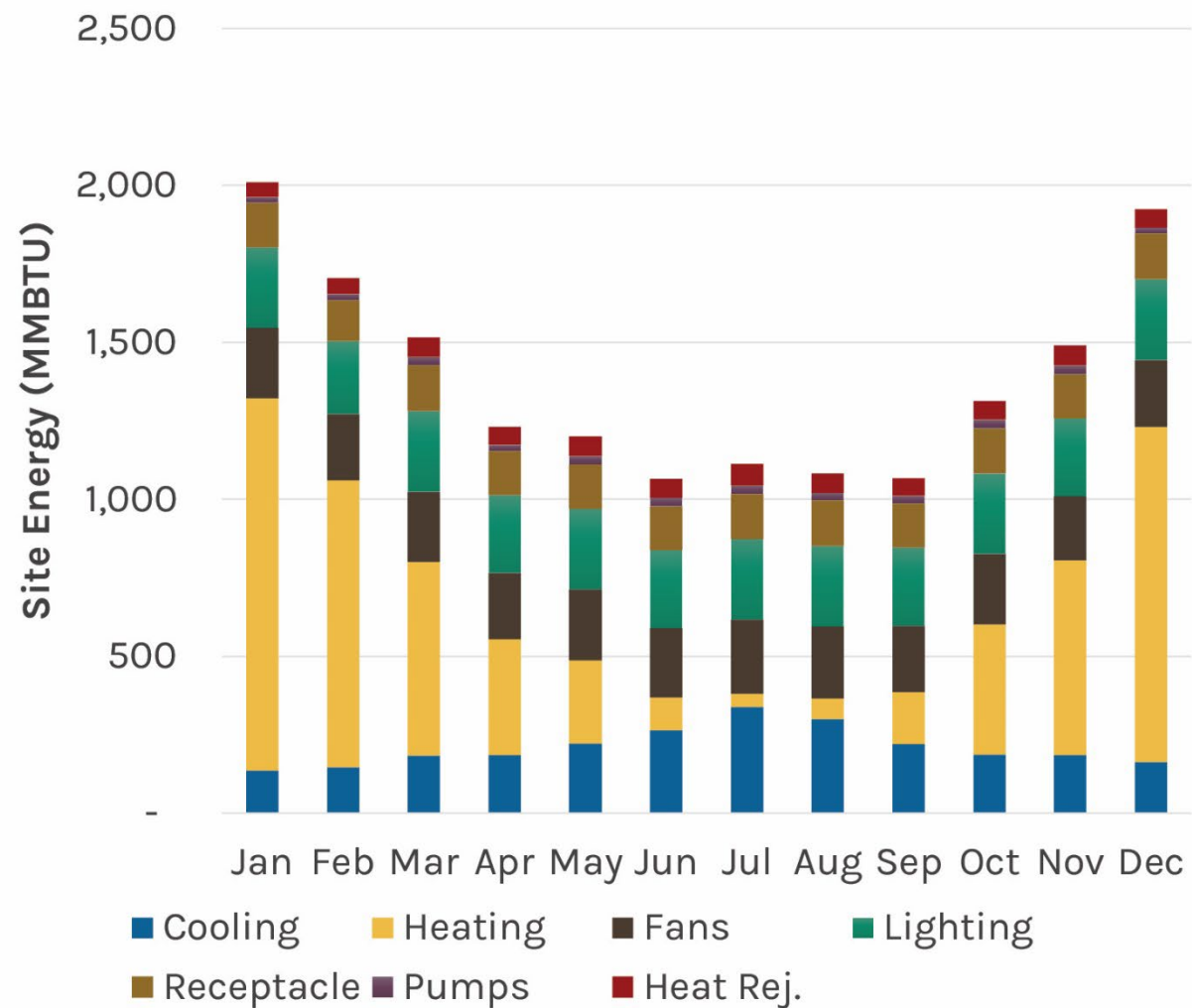
GHG EMISSIONS OVER TIME



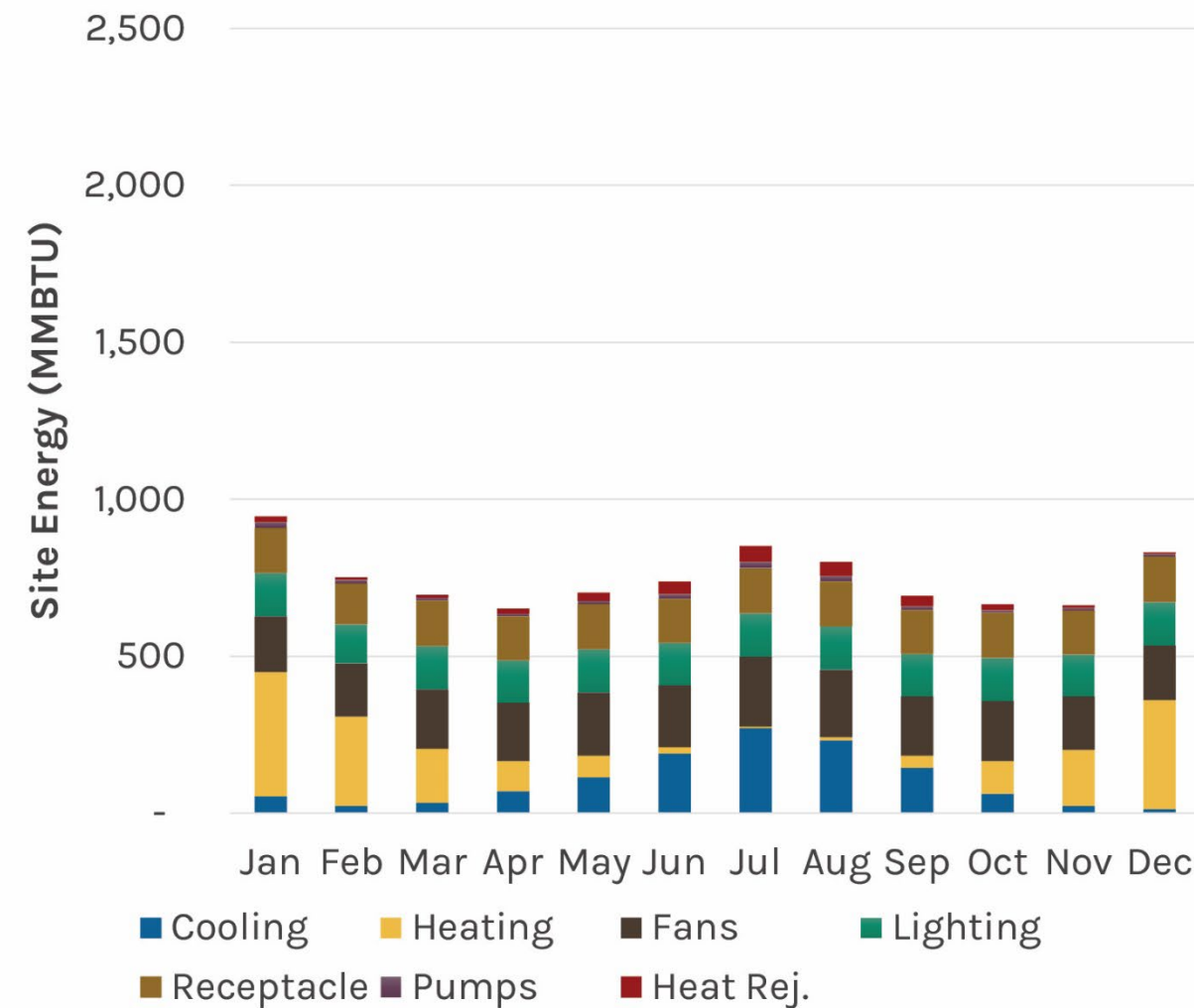
Source: go.iu.edu/climate

ENERGY MODELING

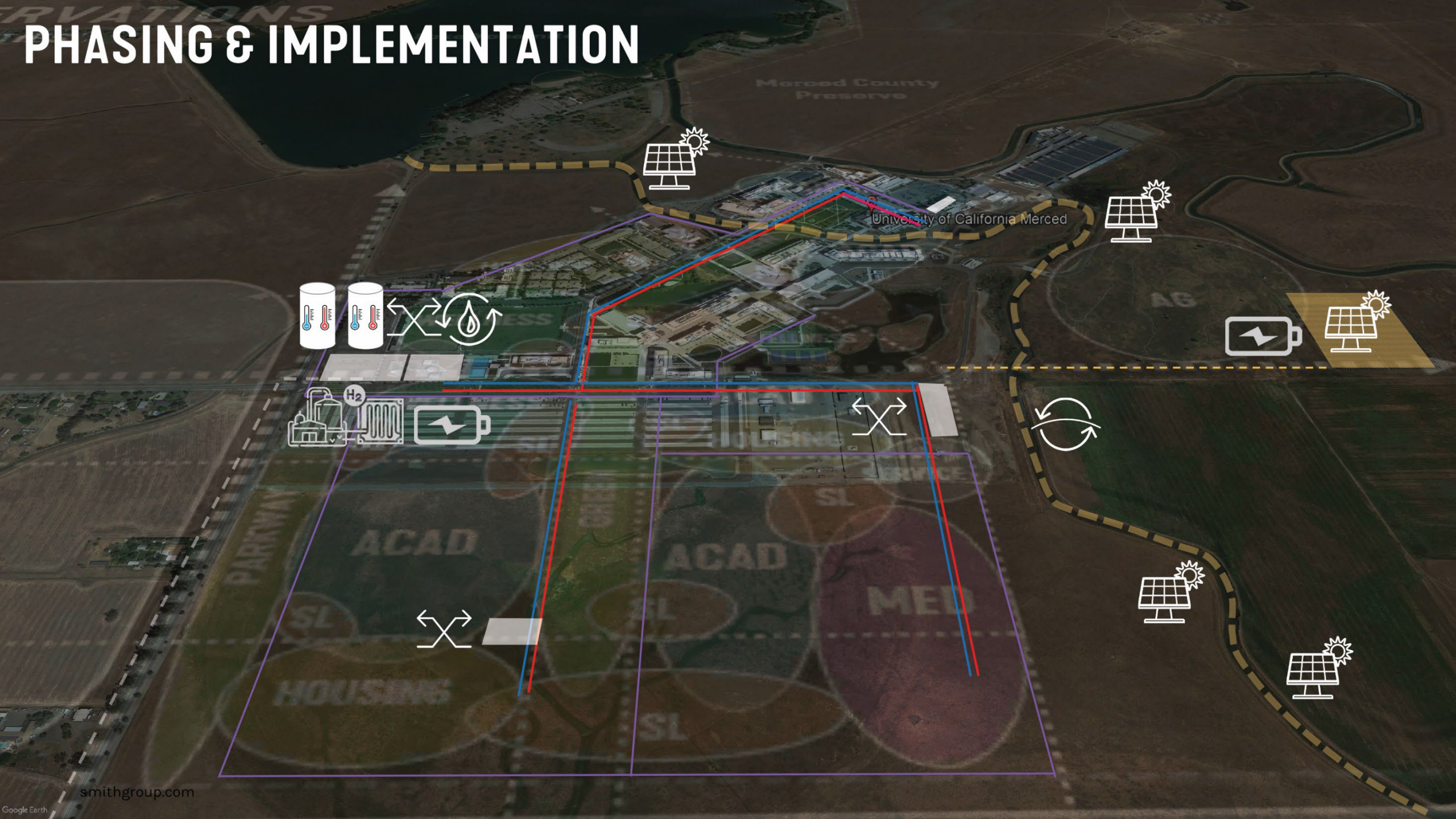
Energy usage before reduction strategies



Energy usage after reduction strategies



PHASING & IMPLEMENTATION



An aerial photograph of a university campus, likely the University of Toronto, showing a dense collection of trees and several large, historic-style buildings. The image is in grayscale and has a dark, semi-transparent overlay. The text "Q & A" is centered in the middle of the image.

Q & A



THANK YOU

For joining us today and for sharing your thoughts and comments!

PLEASE STAY INVOLVED

QUESTIONS & COMMENTS

Email questions and comments to:
climactn@iu.edu

STAY INVOLVED

Follow the website:
go.iu.edu/climate

HELP US SPREAD THE WORD

Tell your friends, classmates, and colleagues about this process and join us for upcoming sessions!

(check out the website for more information)

Image Source: Indiana University